

UNIVERSITY OF MINNESOTA

Duluth Campus

*Department of Studies in Justice, Culture, and Social Change
College of Humanities, Arts, and Social Sciences*

228 Cina Hall
1123 University Drive
Duluth, Minnesota 55812-3306
E-mail: troufs@d.umn.edu
ZOOM: <https://umn.zoom.us/my/troufs>
10 April 2022





Global Cultures Week 13



Direct Links
to Canvas



Available on-line in your  canvas folder at
<<http://canvas.umn.edu/>> 

s2022 [Canvas Modules](#) 
([Module 13](#))

(click links for details)

 = leave page



[Tim Roufs](#) , Brisbane, Australia, 2017

What's Happening Week 13?

Presentations are due,
as well as the (optional) Extra Credit reports.

THIS WEEK'S HIGHLIGHTS

(click links for details)

 = leave page



GENERAL COMMENTS FOR THE WEEK

This week, we're off to visit the Aymara weaver women in Andean communities of Bolivia. In the award-winning film *Tejiendo Relatos*—"Weaving Stories" we'll hear their stories which are told against a backdrop of high Andean lakes and mountains. And in our Readings we'll visit their neighbors in Brazil and Argentina.

And for dessert this week, we'll enjoy some *Sweet Treats around the World*, offered up by Tim and Kim.

DUE THIS WEEK: Your Presentation.

DUE: (optional) Extra Credit Reports:

Extra Credit: Film / Lecture / Event Review

Extra Credit: Case Study

Extra Credit: "Event": The American Swedish Institute and IKEA

As always Live Chat is at 7:00 p.m. on Tuesday, a handy time to ask questions about your Presentation and/or your term Paper and/or whatever. But if that time is not convenient, e-mail. . . .

REM: Your Term Paper is due next week.

IN-THE-NEWS WEEK 2

Media Bias Chart

Fake News

Sign Up in your Course Google Drive Folder:

s2022 external<<https://docs.google.com/document/d/1IbtFKL5IaJmKdZErBz9vhTvFwQG5Uzmff0LFwOspuuE/edit?usp=sharing>>

Brazil – Dylan B.
Argentina – Sofia D.
Ethiopia – Justin A.

(optional) **LIVE CHAT: OPEN FORUM / OFFICE HOURS . . .**

(Tuesday, 7:00-8:00 CDT, or E-mail)

Contact Information

VIDEO EXPLORATIONS WEEK 13

Real People . . . Real Places . . .

Videos for the Semester

▶ ***Tejiendo Relatos -- "Weaving Stories"***

[Aymara; Bolivia]

(56:56 min.)

on-line access

[click ↑ here]

course viewing guide

Film WebPage



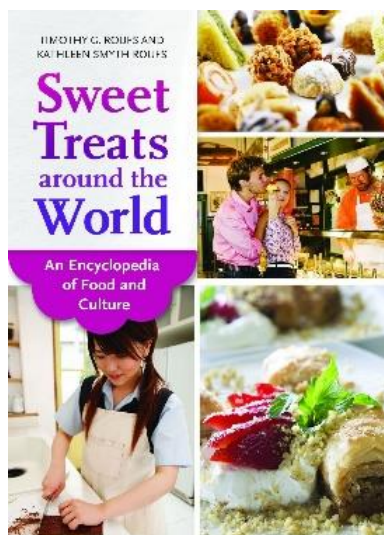
WEEK 13 SLIDES

Class Slides for the Semester

**Methodological Perspectives of
“Sweet Treats around the World”**

(.pptx)

[click ↑ here]



READINGS FOR WEEK 13

[Readings for the Semester](#)

[Textbook Information](#)

Latin American: Brazil and/or Argentina



PART XII: SAME METAPHOR, DIFFERENT MEANINGS

Chapter 34: The Spanish Bullfight (Review)
Chapter 34: The Spanish Bullfight (Review)

Pick at least one of the Modern-day Latin American cultures with a musical metaphor . . .

PART IV: OTHER EGALITARIAN CULTURES

Chapter 36: The Brazilian Samba
Chapter 37: The Argentine Tango

(assigned readings are in bold letters)

OTHER ASSIGNMENT INFORMATION

[Main Due Dates](#)

s2022 **Module 13 – Week 13**

FINAL EXAM . . .

[General Final Exam Information](#)

DUE: PROJECT INFORMATION . . .

[Basic Information](#)

[Main Due Dates](#)

s2022 **Due GC Wk 13: Presentations DROPBOX**

[click  here]

REM: Your Term Paper is due next week.



[Details of Presentation](#)



[Details of Term Paper](#)

DISCUSSION WEEK 13 . . .

**Once again, no Canvas Discussion this Week.
Focus on finishing your Presentation.**

(optional) **FOR FUN TRIVIA**

[Trivia HomePage](#)

**And there is also no Trivia this Week.
Focus on finishing your Presentation.**

DUE: (optional) EXTRA CREDIT . . .

[Basic Extra Credit Information](#)

DUE: (optional) Case Study Review

DUE: (optional) Lecture/Video/Event Review

**DUE: (optional) The American Swedish Institute
and IKEA Twin Cities**

**You may submit a maximum of two extra credit activities,
one Review[🔗](#) and one Case Study[🔗](#)**

**Extra credit will not be accepted later
than the end of Week 13, Saturday, 16 April 2022.**

OTHER (optional) . . .

QUESTIONS? / COMMENTS?

General Comments for the Week

This week, we're off to visit the Aymara weaver women in Andean communities of Bolivia. In the award-winning film *Tejiendo Relatos*—"Weaving Stories" we'll hear their stories which are told against a backdrop of high Andean lakes and mountains. And in our Readings we'll visit their neighbors in Brazil and Argentina.

And for dessert this week we'll enjoy some *Sweet Treats around the World*, offered up by Tim and Kim.

DUE THIS WEEK: Your Presentation (DROPBOX).

DUE: (optional) Extra Credit Reports:

Extra Credit: Film / Lecture / Event Review

Extra Credit: Case Study

Extra Credit: "Event": The American Swedish Institute and IKEA

As always Live Chat is at 7:00 p.m. on Tuesday, a handy time to ask questions about your Presentation and/or your term Paper and/or whatever. But if that time is not convenient, e-mail. . . .

REM: Your Term Paper is due next week.

IN-THE-NEWS WEEK 13

Be sure to have a look at the news reports of the week . . .

Sign Up in your Course Google Drive Folder:

s2022 <<https://docs.google.com/document/d/1IbtFKL5IaJmKdZErBz9vhTvFwQG5Uzmff0LFwOspuuE/edit?usp=sharing>>[↗](#)

[click [↑](#) here]

Brazil[↗](#) – Dylan B.
Argentina[↗](#) – Sofia D.
Ethiopia[↗](#) – Justin A.



Global Cultures News-of-the-Week Summaries

(optional) **LIVE CHAT: OPEN FORUM / OFFICE
HOURS . . .**

[Contact Information](#)[↗](#)

Tuesday, 7:00-8:00 p.m. (CDT)

“ZOOM”[↗](#)

[click [↑](#) here]

or

e-mail anytime: <mailto:troufs@d.umn.edu>[↗](#)

[click [↑](#) here]



Live Chat is optional.

VIDEO EXPLORATIONS WEEK 13 . . .

Real People . . . Real Places . . .

Videos for the Semester[🔗](#)

Tejiendo Relatos -- "Weaving Stories"

[Aymara; Bolivia]

(56:56 min.)

on-line access[🔗](#)

[click  here]

Film WebPage[🔗](#)

course viewing guide[🔗](#)

**Best Ethnographic Film Award
at the XXVI International Festival of Ethnological Film Belgrade 2017**

**IAMS Award
at the ESPIELLO International Ethnographic Documentary Festival 2017 and the**

*"El vídeo participativo es más que un proceso de realización,
Es una herramienta para cambiar el mundo que nos rodea."*

**["Participatory video is more than a process of realization;
It is a tool to change the world around us".]**

"Tejiendo Relatos is a documentary that reflects the role of weaving women in the Andean communities of Bolivia. The purpose of this work is to make the world of these women known, expressed through ancestral textile techniques."

"... The objective of this project is to publicize their work, in order to revalue an art that unfortunately is on the way to extinction." – verkami.com



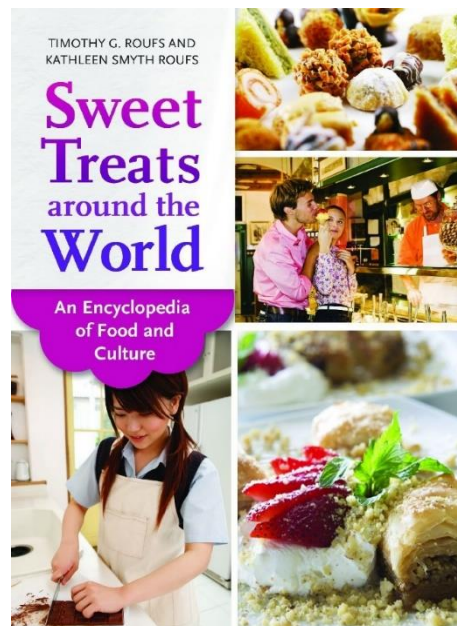
WEEK 13 SLIDES . . .

[Class Slides for the Semester](#)

Methodological Perspectives of “Sweet Treats around the World”

(.pptx)

[click  here]



READINGS FOR WEEK 13 . . .

[Readings for the Semester](#)

[Textbook](#)

Latin American Brazil and/or Argentina



PART XII: SAME METAPHOR, DIFFERENT MEANINGS

Chapter 34: The Spanish Bullfight (Review)

Chapter 34: The Spanish Bullfight (Review)

Pick at least one of the Modern-day Latin American cultures with a musical metaphor . . .

PART IV: OTHER EGALITARIAN CULTURES

Chapter 36: The Brazilian Samba

Chapter 37: The Argentine Tango

(assigned readings are in **bold** letters)

Work on Readings for Your Term Paper
(which is due next week)

OTHER ASSIGNMENT INFORMATION . . .

[Main Due Dates](#)

s2022 [Module 13 – Week 13](#)

FINAL EXAM . . .

[General Midterm Exam Information](#)

PROJECT INFORMATION . . .

[Basic Information](#)

[Main Due Dates](#)

DUE: Your Presentation

This week we get on with the crown jewel of the semester, your Presentations.

As I have been mentioning throughout the semester a major part of this course is your **research project**—not just for the points, but because researching a topic you are interested in, and presenting your findings to others, and then writing the results up as a formal paper, is one of the best ways to

learn things, *and* it gives you valuable practice for presenting your ideas and arguments.

Keep in mind what I said earlier on about your ***Presentations***, viz., that they are intended to be a report on *work in progress*, that is, basically, a rough draft of your ideas that should eventually make their way into your final Term Paper.[↗](#)

Generally it is a good idea to pretty much finish at least a draft your paper before you do too much work on your presentation (your presentation is basically a preliminary report on your work-in-progress paper).

The Class Presentation WebPage with basic information, if you would like to review, is at

<<http://www.d.umn.edu/cla/faculty/troufs/anth1095/fspresentations.html#title>>[↗](#)

[click [↑](#) here]

s2022 **Due GC Wk 13: Presentations DROPBOX**[↗](#)

[click [↑](#) here]



Demosthenes Practising Oratory(1870)
Jean-Jules-Antoine Lecomte du Nouÿ(1842–1923)
Wikipedia

REM: **Your Term Paper is due next week . . .**
And at least start thinking about the Final Exam.

Details are at . . .

<https://www.d.umn.edu/cla/faculty/troufs/anth1095/fsterm_paper.html#title>[🔗](#)

DROPBOX:

s2022 <https://canvas.umn.edu/courses/282690/assignments/2190820?module_item_id=7028059>[🔗](#)

[click [↑](#) here]



Charles Dickens (1842)
Francis Alexander (1800-1880)
Wikipedia

DUE: DISCUSSION WEEK 13 . . .

Once again, no Canvas Discussion this Week.
Focus on finishing your Presentation.

(optional) **FOR FUN TRIVIA FOR THE WEEK**

**And there is also no Trivia this Week.
Focus on finishing your Presentation.**

DUE: (optional) EXTRA CREDIT . . .

[Basic Extra Credit Information](#)

DUE: (optional) Extra Credit Reports

**You may submit a maximum of two extra credit activities,
one [Review](#) and one [Case Study](#)**

**Extra credit will not be accepted later than
the end of Week 13, Saturday, 16 April 2022.**

(A) Extra Credit Review: Lecture / Film / Event

Information:

http://www.d.umn.edu/cla/faculty/troufs/anthfood/afextracredit_review.html#title

Review DROPBOX:

s2022 Week 13 <<https://canvas.umn.edu/courses/282690/modules/items/7028028>>

[click ↑ here]

(B) Extra Credit Case Study

Information:

http://www.d.umn.edu/cla/faculty/troufs/anthfood/afextracredit_cs.html#title

Case Study DROPBOX:

s2022 Week 13 <<https://canvas.umn.edu/courses/282690/modules/items/7028029>>

[click ↑ here]

**(C) Extra Credit The American Swedish Institute
and IKEA Twin Cities**

Information:

s2022 <https://canvas.umn.edu/courses/282690/assignments/2190829?module_item_id=7028030>

ASI/IKEA DROPBOX:

s2022 **Week 13** <<https://canvas.umn.edu/courses/282690/modules/items/7028030>>

[click  here]

OTHER (OPTIONAL) . . .

QUESTIONS? / COMMENTS . . .

If you have any **questions or comments** right now, please do not hesitate to post them on the  canvas “Discussions”, or e-mail troufs@d.umn.edu, or ZOOM <https://umn.zoom.us/my/troufs>. (E-mail is fastest, and most generally best as quite often URLs need be sent.)

Best Wishes,

Tim Roufs

<<http://www.d.umn.edu/~troufs/>>

<<https://umn.zoom.us/my/troufs>>

<[other contact information](#)>